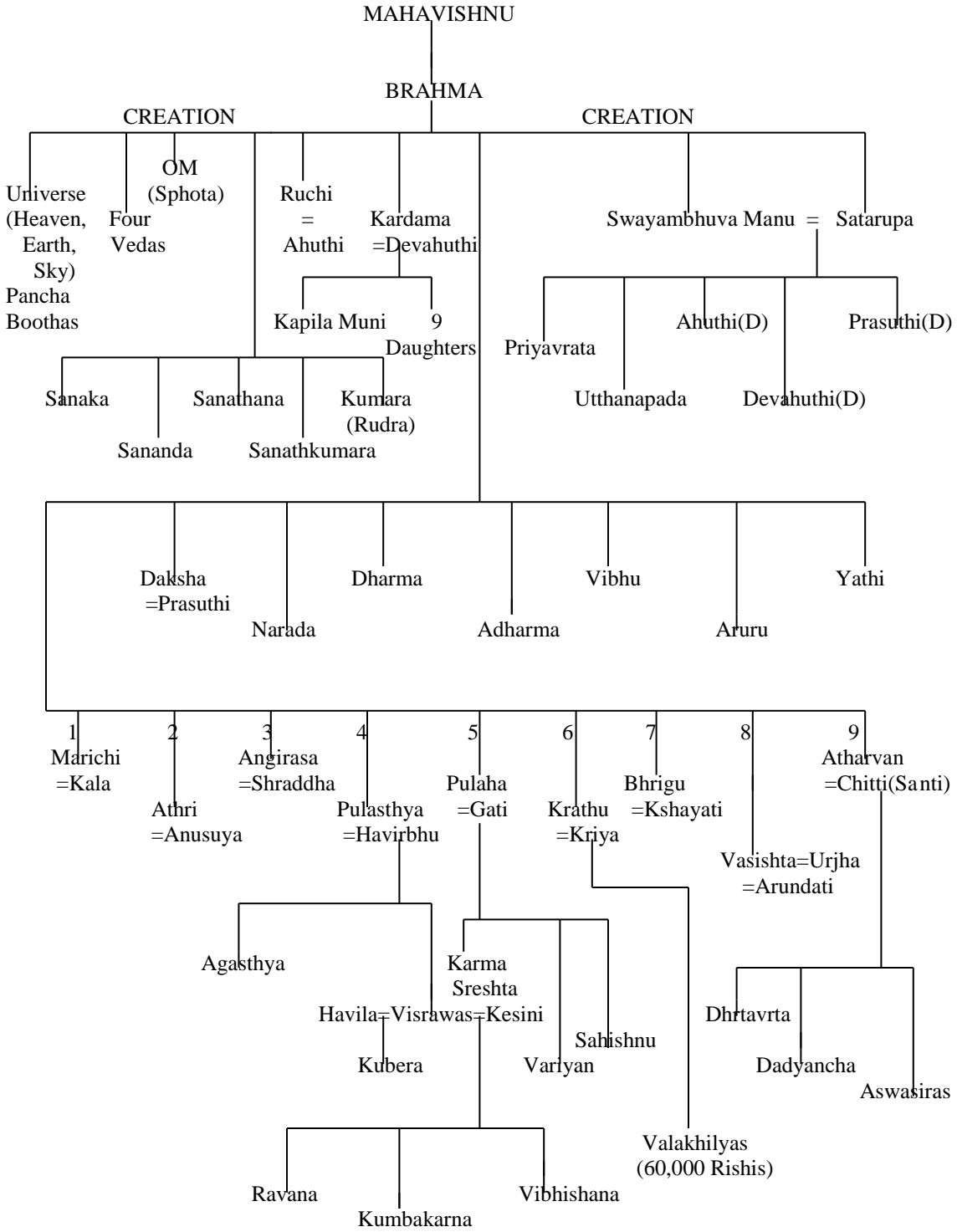


GRM Chart-1 Gothra Rishi Moolam

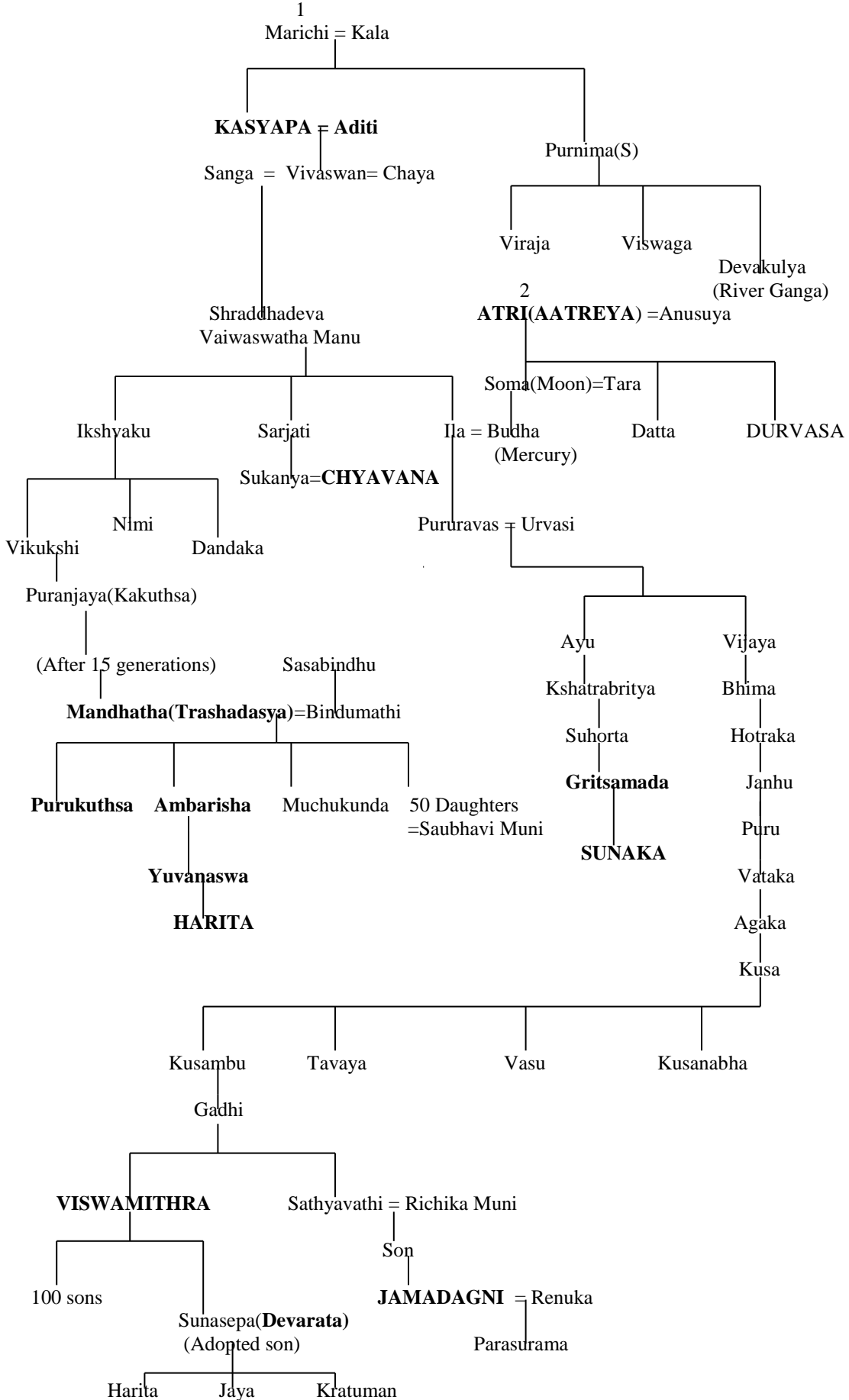


Notes on this Chart:

1. Brahma created one human female(Satarupa) and all the rest as human males.
2. The human males were called Prajapathis because they peopled the world with their progeny.
3. Sanaka, Sananda Sanathana, Sanathkumara and Narada did not marry and remained celibates.
4. The rest of the Prajapathies married the daughters of Manu, Kardama and Daksha.

GRM Chart-2 Gothra Rishi Moolam

(Continuation from GRM Chart-1)

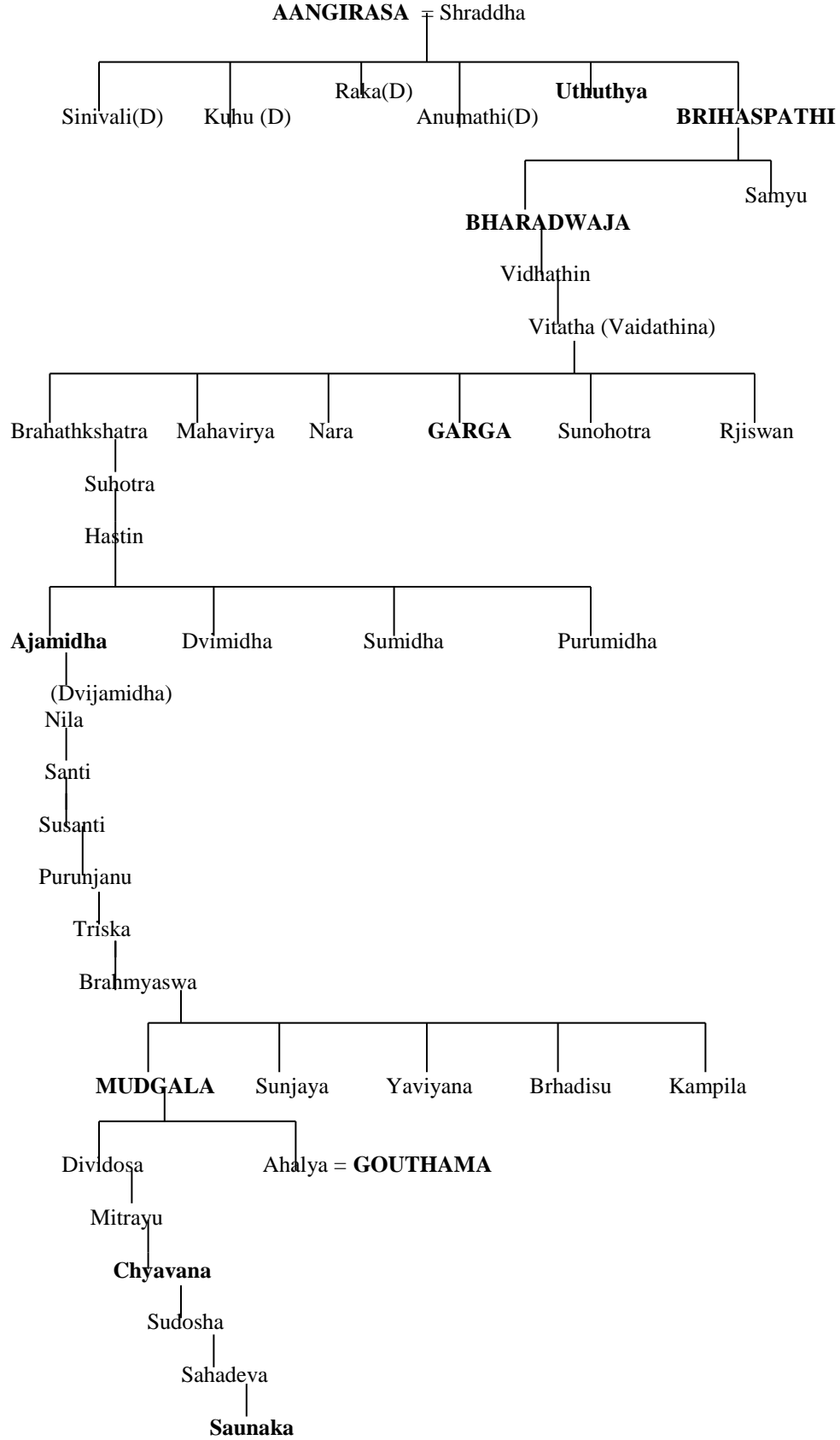


GRM Chart-3

(Continuation from Chart-1)

Gothra Rishi Moolam

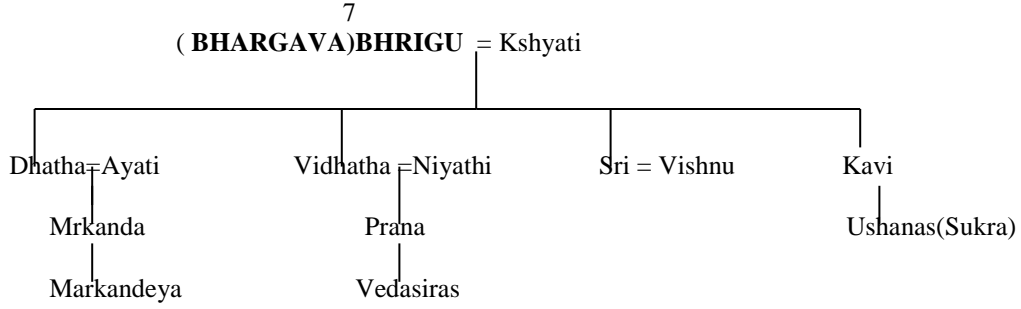
3



GRM Chart-4

Gothra Rishi Moolam

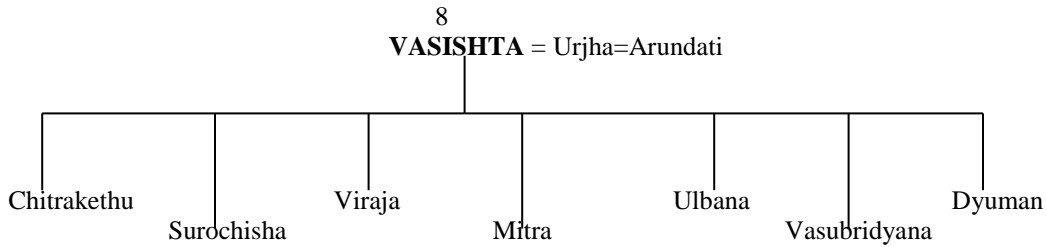
(Continuation from Chart-1)



GRM Chart-5

Gothra Rishi Moolam

(Continuation from Chart-1)



GRM Chart-6

Gothra Rishi Moolam

(Continuation from Chart-2)

